



香港家庭福利會 Hong Kong Family Welfare Society

香港家庭福利會（簡稱「家福會」）於1949年正式成立，為香港其中一個主要的非牟利社會服務機構。我們基於「以家為本」的信念，致力提供高質素的專業社會服務，為香港的家庭及大眾謀福祉，培育一個互相關顧的社會。

Established in 1949, the Hong Kong Family Welfare Society (HKFWS) is one of the major charitable non-governmental social welfare organisations in Hong Kong. With a "family-centric" perspective, we are committed to delivering quality and professional social services to enhance the wellbeing of families and individuals in Hong Kong and foster a caring community.

為配合社會的改變，個人及家庭的需要，本會將繼續發展不同的服務計劃，詳情歡迎瀏覽本會網址。

We will develop new services in accord with the changing needs of the families and community. Please visit our website for details.



hkfws.org.hk

總辦事處 2527 3171

Head Office
香港灣仔軒尼詩道130號修頓中心20樓2010室
Room 2010, 20/F., Southorn Centre,
130 Hennessy Road, Wanchai, Hong Kong

灣仔辦事處 2771 2306

Wan Chai Office
香港灣仔軒尼詩道15號滙莎公爵社會服務大廈1003室
Room 1003, Duke of Windsor Social Service Building,
15 Hennessy Road, Wanchai, Hong Kong

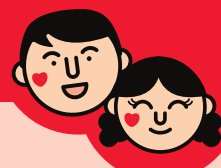
灣仔辦事處 (二) 3795 7567

Wan Chai Office (2)
香港灣仔告士打道109 - 111號東惠商業大廈2701室
Room 2701, Tung Wai Commercial Building,
109 - 111 Gloucester Road, Wanchai, Hong Kong

1 綜合家庭服務 Integrated Family Services

本著「兒童為重、家庭為本、社區為基礎」的服務理念，提供整合服務，包括預防、支援和補救服務等，以加強個人和家庭的抗逆力，以及促進各人預防和應付各種困難和挑戰的能力。

We provide integrated services with a child-centred, family-focused and community-based approach. Our integrated services promote resilience among families and individuals, and facilitate effective ways to prevent and cope with difficulties and challenges.



服務熱線 Service Hotline

家福關懷專線
Family Careline

2342 3110

北角綜合家庭服務中心 2832 9700

North Point Integrated Family Service Centre
北角渣華道123號北角福利服務設施大樓4樓
4/F, North Point Welfare Facilities Block,
123 Java Road, North Point, Hong Kong

油塘綜合家庭服務中心 2775 2332

Yau Tong Integrated Family Service Centre
九龍油塘油麗邨信麗樓1樓
1/F., Shun Lai House, Yau Lai Estate,
Yau Tong, Kowloon

順利綜合家庭服務中心 2342 2291

Shun Lee Integrated Family Service Centre
九龍順利邨順緻街2號順利社區中心4樓
4/F., Shun Lee Estate Community Centre,
2 Shun Chi Street, Shun Lee Estate, Kowloon

深水埗 (西) 綜合家庭服務中心 2720 5131

Shamshui Po (West) Integrated Family Service Centre
新界深水埗元州邨元謙樓2樓204室
Unit 204, 2/F., Un Him House,
Un Chau Estate, Sham Shui Po, Kowloon



將軍澳 (南) 綜合家庭服務中心 2177 4321

Tseung Kwan O (South) Integrated Family Service Centre
新界將軍澳健明邨彩明商場1號平台2號
Unit 2, Podium 1, Choi Ming Shopping Centre,
Kin Ming Estate, Tseung Kwan O, New Territories

葵涌 (南) 綜合家庭服務中心 2426 9621

Kwai Chung (South) Integrated Family Service Centre
新界葵涌葵翠邨碧翠樓平台1層102室
Room 102, Podium 1 Floor, Bik Tsui House,
Kwai Tsui Estate, Kwai Chung, New Territories

崇德家福軒 — 家庭退修中心 * 2650 6762

Zonta White House - Family Retreat Centre *
新界大埔大埔公路4010地段下黃宜坳村
Ha Wong Yi Au Village, DD4010, Tai Po Road,
Tai Po, New Territories

臨床心理服務 Clinical Psychological Service

臨床心理服務
Clinical Psychological Service

2893 0073

2 調解服務及離異家庭服務 Mediation Services and Divorce Services

為分居及離異家庭提供多元化服務，透過家事調解支援有需要的家庭以平和理性態度處理離婚及相關事宜，使雙方及子女的利益同被顧及；同時鼓勵離異父母建立「兒童為本」精神，透過共享親職及穩定的親子聯繫，協助兒童適應家庭轉變。

We provide various mediation services and divorce services to support families to handle divorce related issues in an amiable and rational manners, so that both parents and children's needs are addressed. We also encourage divorced parents to develop child-focused perspective to facilitate children coping with family changes through co-parenting and regular parent-child contact.



服務熱線 Service Hotline

離異家庭及共親職專線
Divorce and Co-parenting Helpline

2465 6868

「親子聯繫」服務專線
Parent-child Connect Service Helpline

8100 8883

調解中心 * 2561 9229

Mediation Centre *
香港西營盤第一街80號A西園
Western Garden, 80A, First Street, Sai Ying Pun, Hong Kong

親籽善共享親職支援中心 8100 8883

Parent-child Connect Specialised Co-parenting Support Centre
九龍荔枝角道838號勵豐中心3樓302室
Unit 302, 3/F., Laford Centre, 838 Lai Chi Kok Road, Kowloon

開放式家庭服務及單親家庭服務 Drop-in Family Services and Single Parent Family Services

家福中心 * 2465 6868

Family Resource Centre *
新界屯門蝴蝶邨蝶意樓地下104 - 106號
104 - 106, G/F., Tip Yee House, Butterfly Estate,
Tuen Mun, New Territories

請支持我們，扶助香港有需要的家庭，共建和諧社會
Please support us to foster a caring community

捐款方法 Donation Methods

- 銀行入賬 Bank Deposit:
滙豐銀行 HSBC 002-1-441464 (一般捐款 General Donation)
- 郵寄劃線支票，支票抬頭：香港家庭福利會
Mail crossed cheques, payable to:
Hong Kong Family Welfare Society
- 7-Eleven便利店
透過全港7-Eleven便利店捐款支持家福會，直接向店員表示捐款予香港家庭福利會即可。
Make cash donation via any 7-Eleven convenience stores. Simply tell the cashier that you would like to make cash donation to the Hong Kong Family Welfare Society.
- 網上捐款 Online Donation
- PayMe by HSBC



- 每月自動轉賬捐款表格，可於網上下載：
Direct Debit Authorisation Form for monthly donation can be downloaded from website:
hkfws.org.hk



多謝 閣下支持本會，本會擬使用你的聯絡資料（如：姓名、電話、傳真、電郵及郵寄地址等）作為本會日後與你作直接促銷 / 推廣接觸之用，包括通訊、社會服務及活動推廣、典禮邀請或籌款等用途。

Thank you very much for your support towards the Hong Kong Family Welfare Society. We intend to use your personal data (such as name, telephone number, fax number, email and mailing address, etc.) for direct marketing / promotion of our social service and activities, event invitation and fundraising.

☐ 本人同意香港家庭福利會使用本人聯絡資料於上述推廣的用途。
I AGREE Hong Kong Family Welfare Society to use my personal data for the purposes stated above.

簽署 Signature: _____

捐款回條

Donation Reply Slip

請在適當之□內填上✓及於_____填上適當資料。
Please tick the box □ and fill in the blanks, where appropriate.

捐款者資料 Donor's Information

□ 先生Mr. / □ 太太Mrs. / □ 女士Ms. / □ 小姐Miss

捐款者 / 機構名稱 Name of Donor / Organisation:

聯絡人 Contact Person:

電話 Tel. No. : _____ 傳真 Fax : _____

電郵 Email : _____

通訊地址 Correspondence Address:

捐款金額 Donation Amount: \$ _____

現附上以下捐款文件，如適用。
Attached the following document(s), where applicable.

□ 銀行存款收據正本 Original Bank-in Slip

□ 劃線支票 Crossed Cheque
(支票號碼 Cheque No: _____)

□ 7-Eleven便利店捐款收據正本
Original receipt issued by 7-Eleven convenience stores

□ PayMe捐款 Donation via PayMe
(捐款日期及時間 日/月/年 Donation date and time dd/mm/yyyy: _____日/月/年 dd/mm/yyyy)

捐款收據 Donation Receipt

□ 為節省行政開支，本人 / 機構不需要收據
To save administrative cost, I / We do NOT need a receipt

□ 請寄回收據到上述地址
Please send me a receipt to the above-mentioned address

□ 請寄回收據到以下地址
Please send me a receipt to the address given below:

請把捐款文件連同此捐款回條寄回：香港家庭福利會
香港灣仔軒尼詩道130號修頓中心20樓2010室
Please send this form together with the document(s) to:
Hong Kong Family Welfare Society
Room 2010, 20/F., Southorn Centre, 130 Hennessy Road,
Wanchai, Hong Kong

捐款額達港幣100元或以上，可憑收據申請扣減稅項
Total donations of HK\$100 or above are tax deductible with official receipt.

若捐款者姓名或地址欠奉，恕不能發回捐款收據
No donation receipt will be issued if name or address is not provided.

查詢電話 Enquiry: 2527 3171

此捐款回條亦可於網上下載
This donation reply slip can be downloaded from website:
hkfw.org.hk

3

兒童服務
Children Services



本會持著「以家為本」的服務信念，提供兒童寄養服務、幼稚園社工服務、愛心社區保姆服務、兒童課後照顧及支援服務、協助及支援有需要的家庭，促進兒童的成長和發展。

Upholding the “family-centric” perspective, the Society has been providing different kinds of children services including the Foster Care Service, Kindergarten Social Work Service, Neighbourhood Support Child Care Project, and the After School Care and Support Programme, to serve and support needy families, and to promote the wellbeing and development of children.



寄養服務及緊急寄養服務
Foster Care Service and Emergency Foster Care Service

良景服務中心
Leung King Service Centre

2497 9079

新界屯門良景邨良智樓地下23 - 25號
G23 - 25, G/F., Leung Chi House, Leung King Estate,
Tuen Mun, New Territories

兒童課後照顧及支援服務
After School Care and Support Programme

藝進同學會賽馬會將軍澳青年坊
ATAA Jockey Club Tseung Kwan O Youth Square

2177 4567

婦女及家庭成長中心 #
Women and Family Enhancement Centre #

2811 5244

愛心社區保姆服務 - 鄰里支援幼兒照顧計劃
Neighbourhood Support Child Care Project

將軍澳 (南) 綜合家庭服務中心
Tseung Kwan O (South) Integrated Family Service Centre

2177 1321

幼稚園社工服務 - 小豆芽社團社工計劃
Kindergarten Social Work Service -
Nurturing Seeds Kindergarten Social Work Service

屯門(東)服務中心
Tuen Mun (East) Service Centre

3101 3037

新界葵芳興芳路223號新都會廣場2座20樓2002室
Unit 2002, 20/F., Metroplaza Tower 2, 223 Hing Fong Road,
Kwai Fong, New Territories

觀塘服務中心
Kwun Tong Service Centre

2720 5911

葵青服務中心
Kwai Tsing Service Centre

2720 5900

4

青少年服務
Youth Services



協助青少年克服在求學及成長中的困難，培養健康成長，發揮潛能，並為處於不利環境的青少年提供支援及輔導。也因應家長管教提供適切活動，促進和諧的家庭及人際關係。

We help young people overcome problems which may hinder their psychosocial development, and to facilitate their personal growth and potential development, and to support youth at risk or in disadvantaged circumstances. Special programmes are tailored to address the parenting issues to promote harmonious family and interpersonal relationship.



服務熱線 Service Hotline

健康上網支援網絡熱線
Counselling on Healthy Use of Internet Hotline

5592 7474

香港東區服務中心
Hong Kong Eastern Service Centre

2549 5106

香港北角英皇道668號健康村第二期地下高層
Upper G/F., Healthy Village Phase II, 668 King's Road,
North Point, Hong Kong

牛頭角服務中心
Ngau Tau Kok Service Centre

2798 8411

九龍牛頭角樂華南邨展華樓地下141 - 150號
141 - 150, G/F., Chin Wah House, Lok Wah South Estate, Kowloon

藝進同學會賽馬會將軍澳青年坊
ATAA Jockey Club Tseung Kwan O Youth Square

2177 4567

新界將軍澳唐明苑停車場大樓地下
G/F., Carpark Block, Tong Ming Court, Tseung Kwan O, New Territories

葵盛服務中心
Kwai Shing Service Centre

2419 7830

新界葵涌葵盛西邨第10座地下123 - 128號
Unit 123 - 128, G/F., Block 10, Kwai Shing West Estate,
Kwai Chung, New Territories

葵盛服務中心 (二)
Kwai Shing Service Centre (2)

2348 2622

新界葵芳興芳路223號新都會廣場2座20樓2002室
Unit 2002, 20/F., Metroplaza Tower 2, 223 Hing Fong Road,
Kwai Fong, New Territories

葵盛服務中心 (三)
Kwai Shing Service Centre (3)

2348 3733

新界葵芳興芳路223號新都會廣場2座20樓2008室
Unit 2008, 20/F., Metroplaza Tower 2, 223 Hing Fong Road,
Kwai Fong, New Territories

5

長者社區照顧及支援服務
Community Care and Support Services for the Elderly



為有需要的長者、家庭及殘疾人士提供家務支援、個人照顧、護理、復康、日間照顧、護老者支援、健康生活推廣及社區支援服務等，讓長者可以按其意願繼續在社區內生活，於家中安享晚年，護老者亦能得到適切的支援。

We provide support in household duties, personal care, nursing care, rehabilitation, day care, carer support, health promotion, and community support services to the elderly or families in need and persons with disability. These services enable elders to stay at home of their choice, while the carers are supported to perform their caring role.



服務熱線 Service Hotline

情緒健康關懷熱線
Emotional Health Care Line

2793 2822

上環服務中心
Sheung Wan Service Centre

2546 3332

香港皇后大道中181 - 183號新紀元廣場低座地下
G/F., Low Block, Grand Millennium Plaza
181 - 183 Queen's Road Central, Hong Kong

愛東服務中心
Oi Tung Service Centre

2564 7555

香港筲箕灣愛東邨愛善樓1樓101室
Unit 101, 1/F., Oi Sin House, Oi Tung Estate,
Shau Kei Wan, Hong Kong

長洲服務中心
Cheung Chau Service Centre

2986 8616

長洲長貴邨長廣樓地下101 - 103號
101 - 103, G/F., Cheung Kwong House,
Cheung Kwai Estate, Cheung Chau

坪洲服務中心
Peng Chau Service Centre

2559 7773

坪洲金坪邨金坪樓N10B地下
N10B, G/F., Kam Peng House, Kam Peng Estate, Peng Chau

南丫島服務中心
Lamma Island Service Centre

2982 4411

南丫島榕樹灣大街31號A地下B座
Block B, G/F., 31A Main Street, Yung Shue Wan, Lamma Island

梅窩服務中心
Mui Wo Service Centre

2984 7920

大嶼山梅窩銀灣邨銀日樓102號地下
Room 102, G/F., Ngan Yat House, Ngan Wan Estate,
Mui Wo, Lantau Island

大澳服務中心
Tai O Service Centre

2985 5797

大嶼山大澳龍田邨幼稚園座1號地下
Unit 1, G/F., Kindergarten Block, Lung Tin Estate,
Tai O, Lantau Island

健明服務中心
Kin Ming Service Centre

2791 7230

新界將軍澳健明邨彩明商場1號平台1號
Unit 1, Podium 1, Choi Ming Shopping Centre,
Kin Ming Estate, Tseung Kwan O, New Territories

坑口服務中心
Hang Hau Service Centre

2653 6343

新界將軍澳坑口村10號A地下
Unit 10A, G/F, Hang Hau Village, Tseung Kwan O, New Territories

順利服務中心
Shun Lee Service Centre

2798 8189

九龍順利邨利富樓3樓 (平台) 10 - 11號
Unit 10 - 11, F3 (Podium Floor), Lee Foo House,
Shun Lee Estate, Kowloon

順安服務中心
Shun On Service Centre

2793 1670

九龍順安邨安逸樓地下1 - 4及9 - 12號
1 - 4 & 9 - 12, G/F., On Yat House, Shun On Estate, Kowloon

牛頭角服務中心
Ngau Tau Kok Service Centre

2796 4880

九龍牛頭角樂華南邨展華樓地下141 - 150號
141 - 150, G/F., Chin Wah House, Lok Wah South Estate, Kowloon

偉業服務中心
Wai Yip Service Centre

2387 7312

九龍觀塘偉業街161號The 80 I 20 3樓全層
3/F, The 80 I 20, 161 Wai Yip Street, Kwun Tong, Kowloon

麗閣服務中心
Lai Kok Service Centre

2361 8212

九龍深水埗麗閣邨麗菊樓129號地下
Unit 129, Lai Kuk House, Lai Kok Estate, Sham Shui Po, Kowloon

麗安服務中心
Lai On Service Centre

2350 0955

九龍深水埗麗安邨麗正樓地下C翼6 - 10號
Unit No.6 - 10, Wing C, G/F., Lai Ching House, Lai On Estate,
Sham Shui Po, Kowloon

葵芳服務中心
Kwai Fong Service Centre

2426 9666

新界葵涌葵芳邨葵仁樓地下11 - 14號
Unit 11 - 14, G/F., Kwai Yan House, Kwai Fong Estate, Kwai Chung,
New Territories

長亨服務中心
Cheung Hang Service Centre

2436 9090

新界青衣長亨邨亨業樓地下A翼
Wing A, G/F., Hang Yip House, Cheung Hang Estate, Tsing Yi,
New Territories

宏福服務中心
Tivoli Service Centre

2436 1413

新界青衣青敬路75號宏福花園第1座地下
G/F., Block 1, Tivoli Garden, 75 Tsing King Road, Tsing Yi,
New Territories

大窩口服務中心
Tai Wo Hau Service Centre

2436 9062

新界葵涌大窩口邨富安樓平台114 - 115號
Unit 114 - 115, Podium Floor, Fu On House, Tai Wo Hau Estate,
Kwai Chung, New Territories

象山服務中心
Cheung Shan Service Centre

2411 3052

新界荃灣象山邨秀山樓地下27 - 30號
27 - 30, G/F., Sau Shan House, Cheung Shan Estate,
Tsuen Wan, New Territories

長者鄰舍中心 Neighbourhood Elderly Centre

2711 2488

九龍城活齡中心
Kowloon City Centre for Active Ageing

九龍土瓜灣九龍城道55 - 61號同興花園第2座1樓
1/F., Block 2, Harmony Garden, 55 - 61 Kowloon City Road,
To Kwa Wan, Kowloon

健康中心 Health Centre

2985 5797

離島扶輪社健康中心 *
Rotary Club of Channel Islands Health Centre *

大嶼山大澳龍田邨天富樓101室
Room 101, Tin Fu House, Lung Tin Estate, Tai O, Lantau Island

利富服務中心 (設有日間護理服務)
Lee Foo Service Centre (with day care service)

2174 7737

九龍順利邨利富樓3樓 (平台) 23號
Unit 23, F3 (Podium Floor), Lee Foo House, Shun Lee Estate,
Kowloon

愛東服務中心
Oi Tung Service Centre

2564 7555

香港筲箕灣愛東邨愛善樓1樓101室
Unit 101, 1/F., Oi Sin House, Oi Tung Estate,
Shau Kei Wan, Hong Kong

長亨服務中心
Cheung Hang Service Centre

2436 9090

新界青衣長亨邨亨業樓地下A翼
Wing A, G/F., Hang Yip House, Cheung Hang Estate, Tsing Yi,
New Territories

6

專項服務
Special Services



開展專項服務及慈善基金，滿足社會中不斷轉變的需求，當中包括為公眾及教育機構提供理財教育服務、為工商機構及政府部門提供僱員支援服務，為個人及家庭提供專業輔導，以協助處理個人、家庭及工作上的問題，並透過推動義工服務，促進參加者發揮潛能，肯定自我和對社會作出貢獻。

Our special services and trust funds meet the changing needs of the community. These include services namely Financial Education Services to education institutions and public, an Employee Assistance Programme for corporations, and tailor made professional fee-charging counselling to individuals and families to overcome and manage personal issues and difficulties affecting the family and workplace. Our volunteer service also facilitates personal growth, self-actualisation and contribution to the community.



服務熱線 Service Hotline

理財教育熱線 Financial Empowerment Hotline

6687 2389

家福慈善基金專線 Benefactors Fund Direct Line

2720 5131

理財教育服務 Financial Education Service *

3950 1900

理財教育中心 Financial Education Centre *
九龍長沙灣道833號長沙灣廣場二期5樓501B室
Unit 501B, 5/F., Tower II, Cheung Sha Wan Plaza,
833 Cheung Sha Wan Road, Kowloon

婦女及家庭成長中心 #
Women and Family Enhancement Centre #

2811 5244

香港筲箕灣耀東邨耀貴樓C翼地下
G/F., Wing C, Yiu Kwai House, Yiu Tung Estate,
Shau Kei Wan, Hong Kong

全人專業服務 Wellness Programme *

2771 1891

香港西營盤第一街80號A西園
Western Garden, 80A First Street, Sai Ying Pun, Hong Kong

慈善基金 Designated Funds *

家福慈善基金 Benefactors Fund

漢基國際學校 - 李淑琴教育基金
CIS Khim Hong Lee Education Fund

2771 1891

香港西營盤第一街80號A西園
Western Garden, 80A First Street, Sai Ying Pun, Hong Kong

服務非由社會福利署資助 *
No service subsidised by Social Welfare Department *

部份服務由社會福利署資助 #
Part of services subsidised by Social Welfare Department #

本會為註冊之有限公司
2024年4月出版
印刷數量 10,500
Incorporated with
Limited Liability
Published in 4/2024
Printing Copies 10,500